



**DEPARTMENT OF DEFENSE
JOINT BASE ANACOSTIA-BOLLING
& 11TH WING (AFDW)
WASHINGTON DC**

15 March 2023

The United States Air Force Band – Washington, D.C.

Ceremonial Brass: Tuba Audition

Preliminary Requirements:

Preliminary audition materials are due no later than **May 22nd, 2023**. Please submit your professional resume and 4 recordings as follows:

Excerpts

Holst First Suite in Eb

Intro, 8th bar after B to the downbeat of C

Vaughn Williams Toccata Marziale

tempo 88, beginning to one measure after circle 3, pickup to circle 14 to 5 measures after circle 15

Grainger Lincolnshire Posy

tempo 62-74, pickup to 51 to 85

Sousa The Stars and Stripes Forever

tempo 120, intro to 20 with repeat, pickup to the “dogfight” section 71-94

Apply Here: <https://forms.gle/AynhxL9fKzEykntr8>

Submission formatting:

- Recordings must be received as an MP3, WAV, M4A, or a compatible Apple/Android audio file type
 - No cloud storage/file sharing links such as Google Docs, Google Drive, or Dropbox
- Resumes must be received as a PDF or Microsoft Word DOC
- Resume file names should be labeled *last name, first name* (example: Doe, Jane)
- Resume must include name, street address, phone number, and email address

Audition Process:

Resumes and digital audio recordings must be received no later than **May 22nd, 2023**. Applicants who are considered qualified for the live audition will be contacted by The USAF Band auditions team, followed by an Air Force recruiter to assess each applicant's eligibility to enlist in the Air Force. Once approved by the recruiter, applicants will receive an audition invitation email. All invited candidates must be prepared to meet Air Force maximum allowable weight standards.

Live auditions will be held on **June 27th, 2023** at Joint Base Anacostia-Bolling, Washington, DC. Candidates will be notified of their invitation status one month prior.

For more information e-mail: usafband.auditions@gmail.com

Musical questions: ceremonialtuba@gmail.com

**** Prior Service and Active Duty members—please contact the USAF Band Auditions team prior to submitting materials.**

15 March 2023

The United States Air Force Band- Washington, D.C.

Ceremonial Brass: Tuba Audition

Live Audition Repertoire:

Solo

Prepare a solo or advanced etude of your choice demonstrating lyrical and technical ability. BBb or CC tuba preferred.

Excerpts

-Holst First Suite in Eb

Intro, 8th bar after B to the downbeat of C

-Vaughn Williams Toccata Marziale

tempo 88, beginning to one measure after circle 3, pickup to circle 14 to 5 measures after circle 15

-Grainger Lincolnshire Posy

tempo 62-74, pickup to 51 to 85

-Sousa The Stars and Stripes Forever

tempo 120, intro to 20 with repeat, pickup to the “dogfight” section 71-94

-King Barnum and Baileys Favorites

tempo in one no slower than 78, measure 25 to downbeat of 43 with repeat, measure 63 to 71 (note: the Ab in measure 68 must begin down the octave along with the remaining ascending line that follows)

-Ives Variations on America

tempo 132 at square L, **tempo 96** from square Q to square R, **tempo 108** from square R to the fourth measure of square S, **tempo 84-96** fifth measure of square S to six measure from the end

-Heed In Storm and Sunshine

tempo 120, beginning to 9, 33 to 42, pickup to 64-80

-Bernstein West Side Story

tempo 62-78, 654 to 668

Quintet (BBb or CC tuba preferred)

-Holst Second Suite in F

Anonymous Die Bankelsangerlieder

Memorized Marching (BBb Sousaphone)

-Boorn Queen City

tempo 120, intro, first and second strain (no repeat)

FIRST SUITE IN E \flat

for Military Band

Basses

1. CHACONNE

GUSTAV HOLST

Op.28, No.1

revised and edited by
COLIN MATTHEWS

Allegro moderato

p legato

Allegro moderato

ff *pesante* *dim.* *p*

C **22**

TOCCATA MARZIALE

Basses

R. VAUGHAN WILLIAMS

Allegro maestoso. ♩ = 88

f

sim.

p

a 2

①

②

③

pp

p

⑭

⑮

simile

"LINCOLNSHIRE POSY"

Based on English Folksongs gathered in Lincolnshire, England by Lucy E. Broadwood and Percy Aldridge Grainger and set for Wind Band (Military Band)

by

PERCY ALDRIDGE GRAINGER

3. "RUFFORD PARK POACHERS"

(Poaching Song)

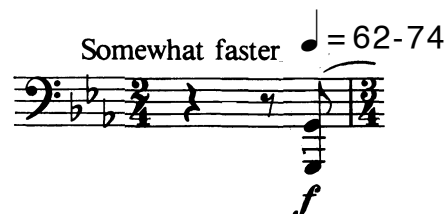
Full Score Edition

Assembled by Frederick Fennell

TUBA

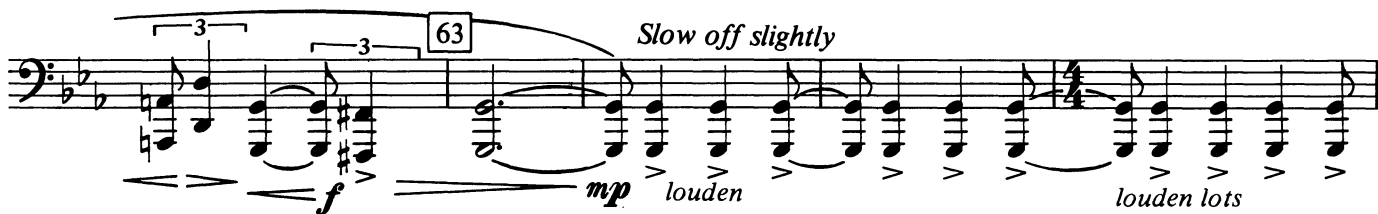
Somewhat faster

$\bullet = 62-74$



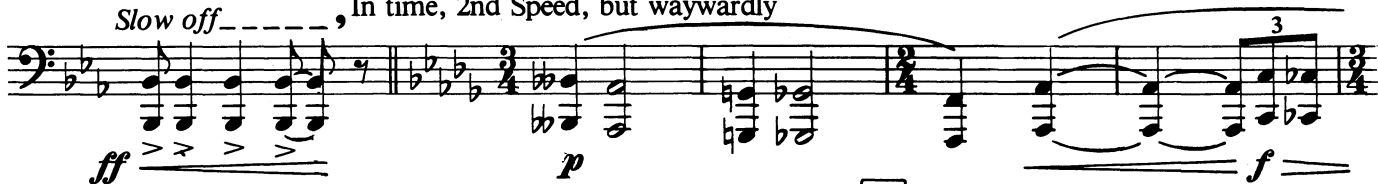
Version A & B

51



68

Slow off -----, In time, 2nd Speed, but waywardly



76



Slow off lots -----

83 In time, 1st Speed



March
THE STARS and STRIPES FOREVER

(1896)

JOHN PHILIP SOUSA

Tuba

March Tempo. ♩ = 120

ff

f [poco]

[poco]

p

f

[p]

1.

2.

[f]

[ff]

Detailed description: This block contains the first 18 measures of the Tuba part. It begins with a dynamic of *ff* and a tempo marking of 'March Tempo. ♩ = 120'. The music is in 2/4 time and features a variety of rhythmic patterns, including eighth and sixteenth notes, and rests. Dynamics range from *ff* to *p*. There are two first endings, with the second ending leading to a double bar line. The key signature has two flats.

ff

Detailed description: This block contains measures 75-78. It features a dynamic of *ff* and a simple rhythmic pattern of eighth notes. The key signature has two flats.

86

Detailed description: This block contains measures 86-90. It starts with a double bar line and a dynamic of *ff*. The music consists of eighth notes and rests. The key signature has two flats.

91

Detailed description: This block contains measures 91-97. It features a dynamic of *ff* and a tempo marking of *molto marc.*. The music consists of eighth notes and rests. The key signature has two flats.

98

ff molto marc.

Detailed description: This block contains measures 98-104. It features a dynamic of *ff* and a tempo marking of *molto marc.*. The music consists of eighth notes and rests. The key signature has two flats.

105

Detailed description: This block contains measures 105-111. It features a dynamic of *ff* and a tempo marking of *molto marc.*. The music consists of eighth notes and rests. The key signature has two flats.

1st X *dim.*
2nd X *cresc.*

Basses.

"Barnum and Bailey's Favorite"

March.

K. L. KING.

$\text{♩} = 156$

The first system consists of two staves of music. The top staff begins with a dynamic marking of *f* and includes a first ending bracket with a double bar line and a second ending bracket. The bottom staff starts with a dynamic marking of *mf* and includes a first ending bracket with a double bar line and a second ending bracket. The music is written in bass clef with a key signature of one flat and a 2/4 time signature.

A single staff of music in bass clef, starting with a dynamic marking of *f*. It includes a first ending bracket with a double bar line and a second ending bracket. The music is written in bass clef with a key signature of one flat and a 2/4 time signature.

8vb

A single staff of music in bass clef, starting with a dynamic marking of *f*. The music is written in bass clef with a key signature of one flat and a 2/4 time signature.

VARIATIONS ON 'AMERICA'

Basses

CHARLES IVES

Transcribed for Band by William E. Rhoads
Based on the Orchestra Version by William Schuman

Var. IV $\text{♩} = 132$

2 1 Solo

f boldly *simile*

Slower $\text{♩} = 96$

ff

Più mosso $\text{♩} = 108$

ff

Meno mosso $\text{♩} = 84-96$ *mf*

ff *mp* *fff* *f*

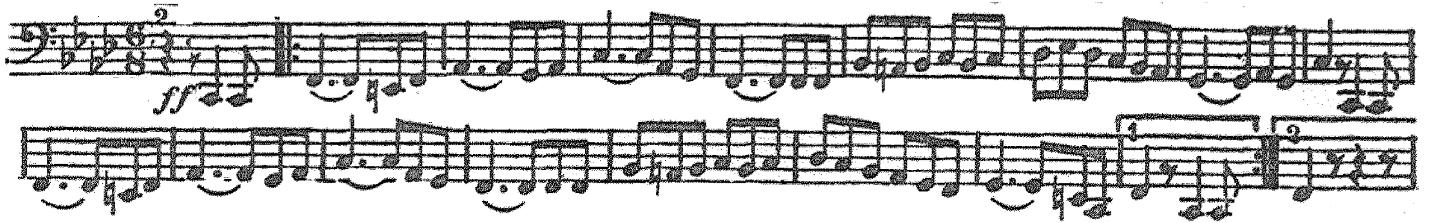
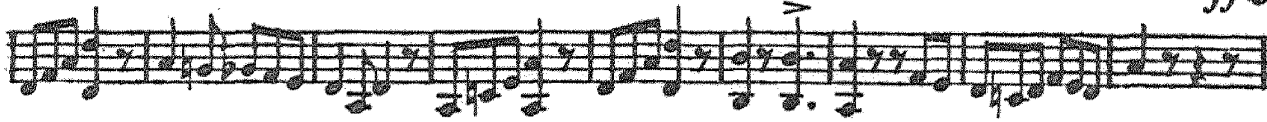
poco rit.

ffp *ff*

$\text{♩} = 120$ In Storm and Sunshine March.

J. C. Heed.

Tuba.



Symphonic Dance Music

from West Side Story

Tuba

4. Fugue

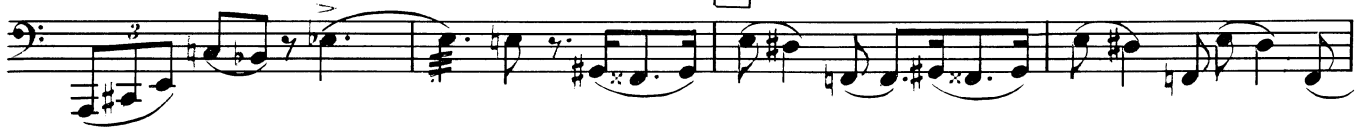
Leonard Bernstein
Transcribed by Ian Polster

Solid and boppy ♩=120-144.

54



60



64



SECOND SUITE IN F

Tuba

March

Gustav Holst

Arr. by David Sabourin

ALLEGRO

The musical score for the Tuba part of the Second Suite in F, March, by Gustav Holst, arranged by David Sabourin. The score is written in bass clef with a 2/2 time signature. It begins with a dynamic marking of *f* (forte). The tempo is marked *ALLEGRO*. The score consists of ten staves of music. The first staff starts with a *f* dynamic. The second staff has a boxed letter 'A' above it. The third staff has a boxed letter 'B' above it. The fourth staff has a boxed letter 'C' above it and a *f* dynamic below it. The fifth staff has a boxed letter 'D' above it. The sixth staff has a boxed letter 'E' above it. The seventh staff has a *DIM.* (diminuendo) marking below it and a *f* dynamic below it. The eighth staff has a boxed letter 'F' above it. The ninth staff has a boxed letter 'G' above it. The tenth staff has a boxed letter 'H' above it. The score ends with a final cadence.

Musical staff with notes and a dynamic marking *mf*.

Musical staff with notes and a boxed letter **G**.

Musical staff with notes and a dynamic marking *tr. p. d.*.

Musical staff with notes and a boxed letter **H**.

Musical staff with notes, a key signature change to B-flat major, and dynamic markings *FINE* and *Dim. p*.

Musical staff with notes and a boxed letter **I**.

Musical staff with notes and a boxed letter **J**.

Musical staff with notes and a dynamic marking *p*.

Musical staff with notes.

Musical staff with notes and a boxed letter **K**. Includes the text *D.C. AL FINE* and a large flourish at the end.

SONATA

from

Die Bänkelsängerlieder

BASS TROMBONE

Baritone

Tuba

Anonymous

(c. 1684)

Edited by ROBERT KING

Allegro

f *p* *ff* *mf* *p* *mp* *f* *allargando*

QUEEN CITY

MARCH

W. H. BOORN

Basses
(Tubas)

1501

ff

ff

ff

p

ff

TRIO

2 3 4 5 2 3 4 5 6 7

mf-ff

Fine

ff

Copyright
Renewed

COPR. © 1927 by the Fillmore Bros. Co.
© 1958 by Carl Fischer, Inc., New York

D. S. al Fine
Int. Copr.
Secured